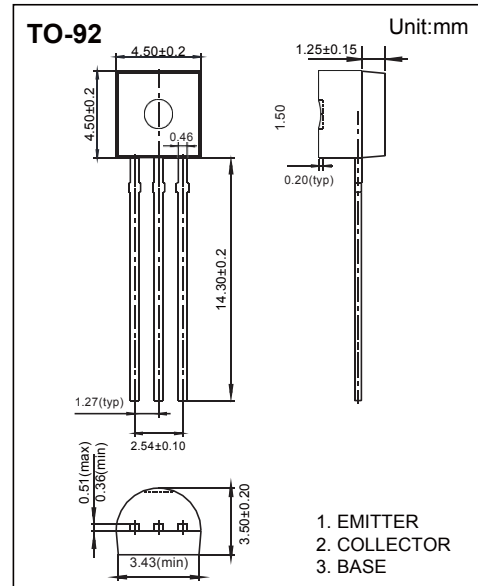


Transistor

PNP Transistors 2SA1015

■ Features

- Power dissipation: (P_c=0.45W)
- Collector current: I_c=0.15A



■ Absolute Maximum Ratings Ta = 25°C

| Parameter | Symbol | Rating | Unit |
|---|------------------|------------|------|
| Collector - Base Voltage | V _{CBO} | -50 | V |
| Collector - Emitter Voltage | V _{CEO} | -50 | |
| Emitter - Base Voltage | V _{EBO} | -5 | |
| Collector Current - Continuous | I _C | -150 | mA |
| Collector Power Dissipation | P _C | 400 | mW |
| Thermal Resistance from Junction to Ambient | R _{θJA} | 312 | °C/W |
| Junction Temperature | T _J | 150 | °C |
| Storage Temperature | T _{stg} | -55 to 150 | |

Transistor

PNP Transistors 2SA1015

■ Electrical Characteristics Ta = 25°C

| Parameter | Symbol | Testconditions | Min | Typ | Max | Unit |
|--------------------------------------|----------------------|--|-----|-----|------|------|
| Collecto- base breakdown voltage | V _{CBO} | I _c = -100 μA, I _E =0 | -50 | | | V |
| Collector- emitter breakdown voltage | V _{CEO} | I _c = -0.1 mA, I _B =0 | -50 | | | |
| Emitter - base breakdown voltage | V _{EBO} | I _E = -100 μA, I _C =0 | -5 | | | |
| Collector cut-off current | I _{CBO} | V _{CB} = -50 V, I _E =0 | | | -0.1 | μA |
| Collector cut-off current | I _{CEO} | V _{CE} = -50V, I _B =0 | | | -0.1 | |
| Emitter cut-off current | I _{EBO} | V _{EB} = -5V, I _C =0 | | | -0.1 | |
| Collector-emitter saturation voltage | V _{CE(sat)} | I _C =-100 mA, I _B = -10mA | | | -0.3 | V |
| Base - emitter saturation voltage | V _{BE(sat)} | I _C =-100 mA, I _B = -10mA | | | -1.1 | |
| DC current gain | h _{FE} | V _{CE} = -6V, I _C = -2mA | 70 | | 700 | |
| Noise figure | NF | V _{CE} = -6 V, I _C = -0.1mA, f =1kHz,R _G =10kΩ | | | 6 | dB |
| Collector output capacitance | C _{ob} | V _{CB} =-10V,I _E =0,f=1MHz | | | 7 | pF |
| Transition frequency | f _T | V _{CE} = -5V, I _C = -10mA,f=30MHz | 150 | | | MHz |

■ Classification

| Rank | O | Y | GR | BL |
|-------|--------|---------|---------|---------|
| Range | 70-140 | 120-240 | 200-400 | 350-700 |